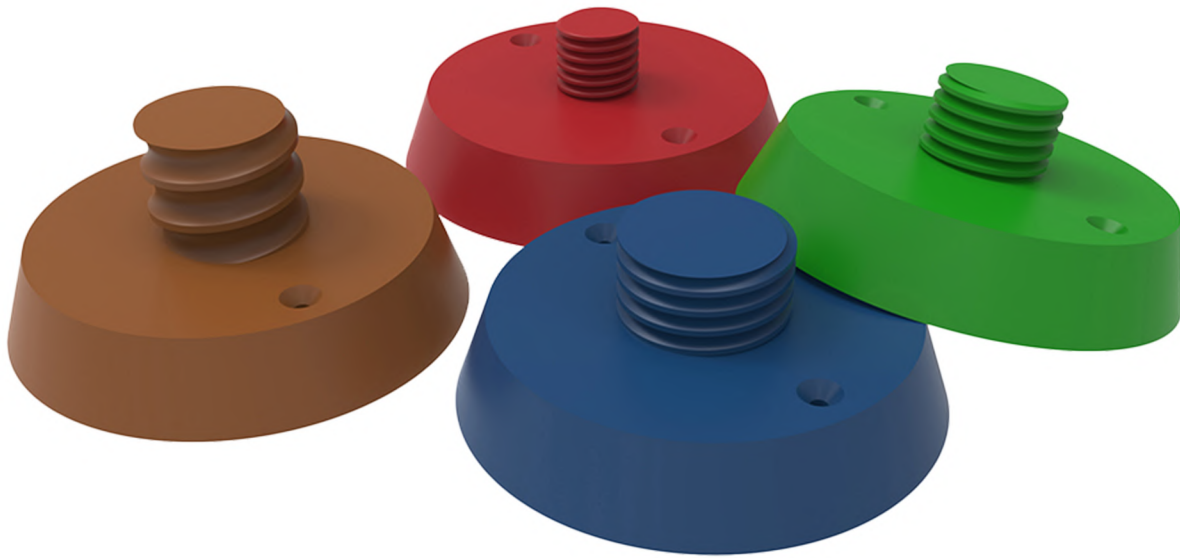


# FERRULE NAILING PLATES



## PRECISION PLACEMENT FOR RELIABLE STRUCTURAL CONNECTIONS

Danter's **Ferrule Nailing Plates** are engineered to ensure accurate and secure positioning of ferrules in precast and tilt-up concrete applications. These plates are designed to screw into the ferrule and be mechanically fastened to the formwork, maintaining the ferrule's position during concrete pours and leaving a clean recess for post-pour access. Manufactured to meet Australian and New Zealand standards, these reusable plates are essential for projects requiring precision and efficiency.

## SPECIFICATIONS:

Product Code	Description	Pack Qty
109238	Ferrule Nailing Plate M12	100
111528	Ferrule Nailing Plate M16	100
106590	Ferrule Nailing Plate M20	100
111529	Ferrule Nailing Plate M24	100

## KEY FEATURES & BENEFITS

- ▶ **Accurate Alignment:** Ensures ferrules are correctly positioned for structural connections
- ▶ **Secure Fixing:** Mechanical fastening to formwork prevents movement during concrete pours
- ▶ **Clean Recess Formation:** Leaves a neat recess in the concrete panel for post-pour access
- ▶ **Reusable Design:** Durable construction allows for multiple uses, enhancing cost-efficiency
- ▶ **Color-Coded Sizes:** Quick identification of plate sizes reduces installation errors
- ▶ **Standards Compliant:** Conforms to AU/NZ construction standards for safety and reliability

## AREAS OF APPLICATIONS

- **Precast Concrete Panels** – Ensures accurate ferrule placement for structural connections
- **Tilt-Up Construction** – Facilitates secure fixing of ferrules in tilt-up panel applications
- **Infrastructure Projects** – Suitable for use in bridges, tunnels, and other civil structures
- **Commercial and Industrial Builds** – Ideal for projects requiring precise alignment of structural elements