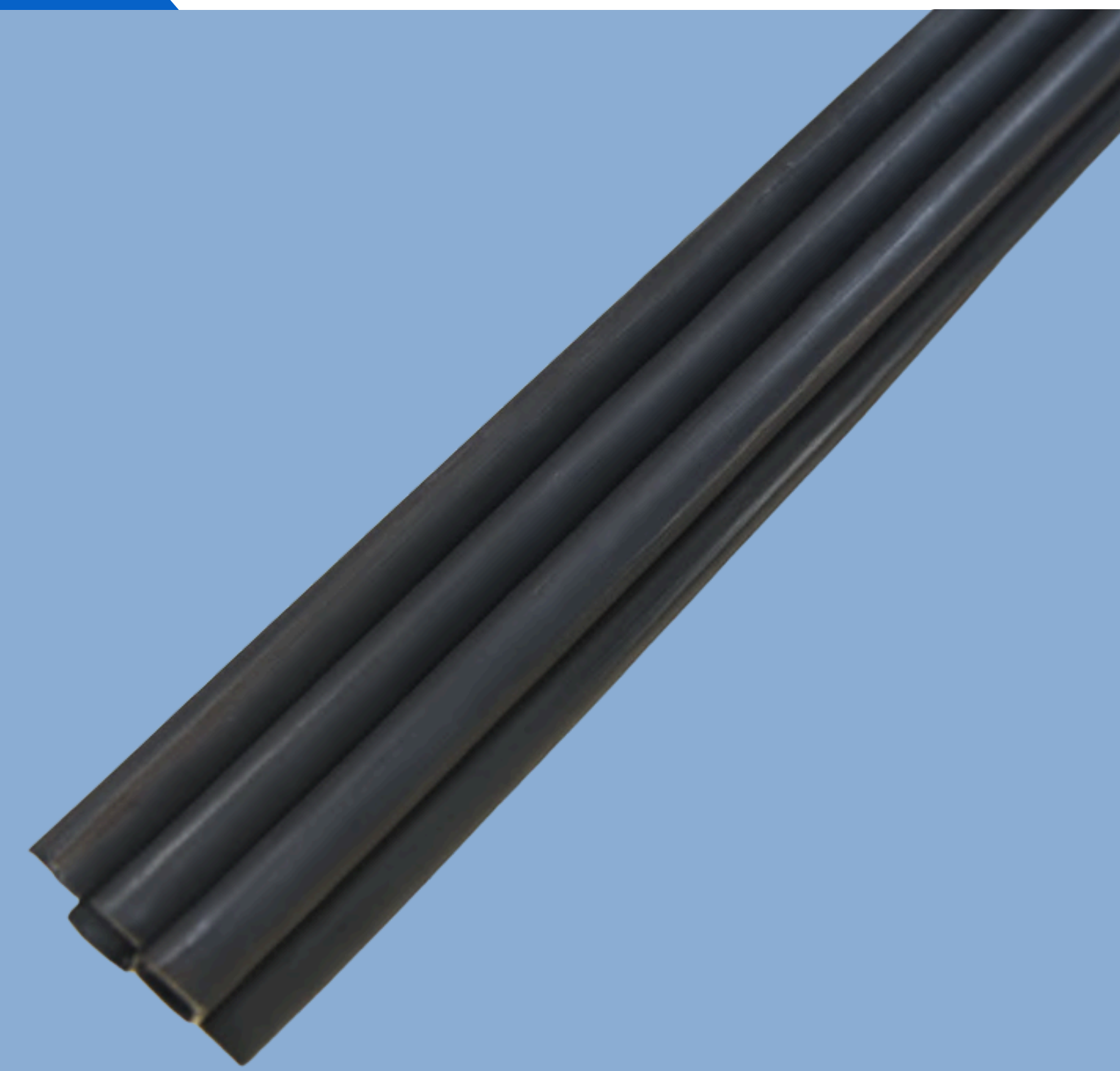


# Black Dowels

## PRODUCT DESCRIPTION

Danterr's Black Dowels are precision-engineered from high-strength Grade 400 & 500 structural steel, ensuring optimal performance in load transfer across concrete joints. Unlike cropped alternatives, these dowels are friction-cut, maintaining the integrity of the steel's grain structure to allow smooth axial movement and controlled expansion and contraction. This prevents joint locking and reduces the risk of slab cracking or misalignment.

Ideal for use in heavy-duty construction applications, including airport pavements & apron slabs. Danterr's Black Dowels provide long-term structural stability and compliance with AS/NZS 3679.1:2016. Their robust composition makes them suitable for environments subject to dynamic loads and thermal shifts, ensuring durability and performance where it counts.



## FEATURES & BENEFITS

- Friction-cut ends avoid steel deformation
- Compliance with AS/NZS 3679.1:2016
- Large diameter for high-load resistance (R39, R50)
- Cost-effective load transfer solution
- Easy integration with dowel cradle systems
- Supports long-term slab joint stability

## APPLICATIONS

- Civil infrastructure joints
- Industrial warehouse flooring
- External hardstands and heavy-duty slabs
- Airport aprons and pavement joints

## TECHNICAL SPECIFICATIONS

Property	Value
Material Standard	AS/NZS 3679.1:2016 (Grade 400 steel)
Diameter Options	R39, R50, other diameters available on request
Length Range	510mm, 600mm, 610mm, other lengths available on request
End Type	Friction-cut (not cropped)
Shape	Round steel bar

## STORAGE & SHELF LIFE

- Store in dry, shaded areas to prevent corrosion
- No specific shelf life when stored correctly

## SAFETY & HANDLING

- Use gloves to prevent cuts from sharp ends
- Follow manual handling guidelines for heavy bars

## PACKAGING & AVAILABILITY

Product Code	Description
110101	Dowel R39 x 510mm Black
107911	Dowel R50 x 600mm Black
122787	Dowel R50 x 610mm Black

For custom diameters, lengths, or project-specific black dowel enquiries, contact **Danterr** at: [sales@danterr.com](mailto:sales@danterr.com) or **1800 262 383**.