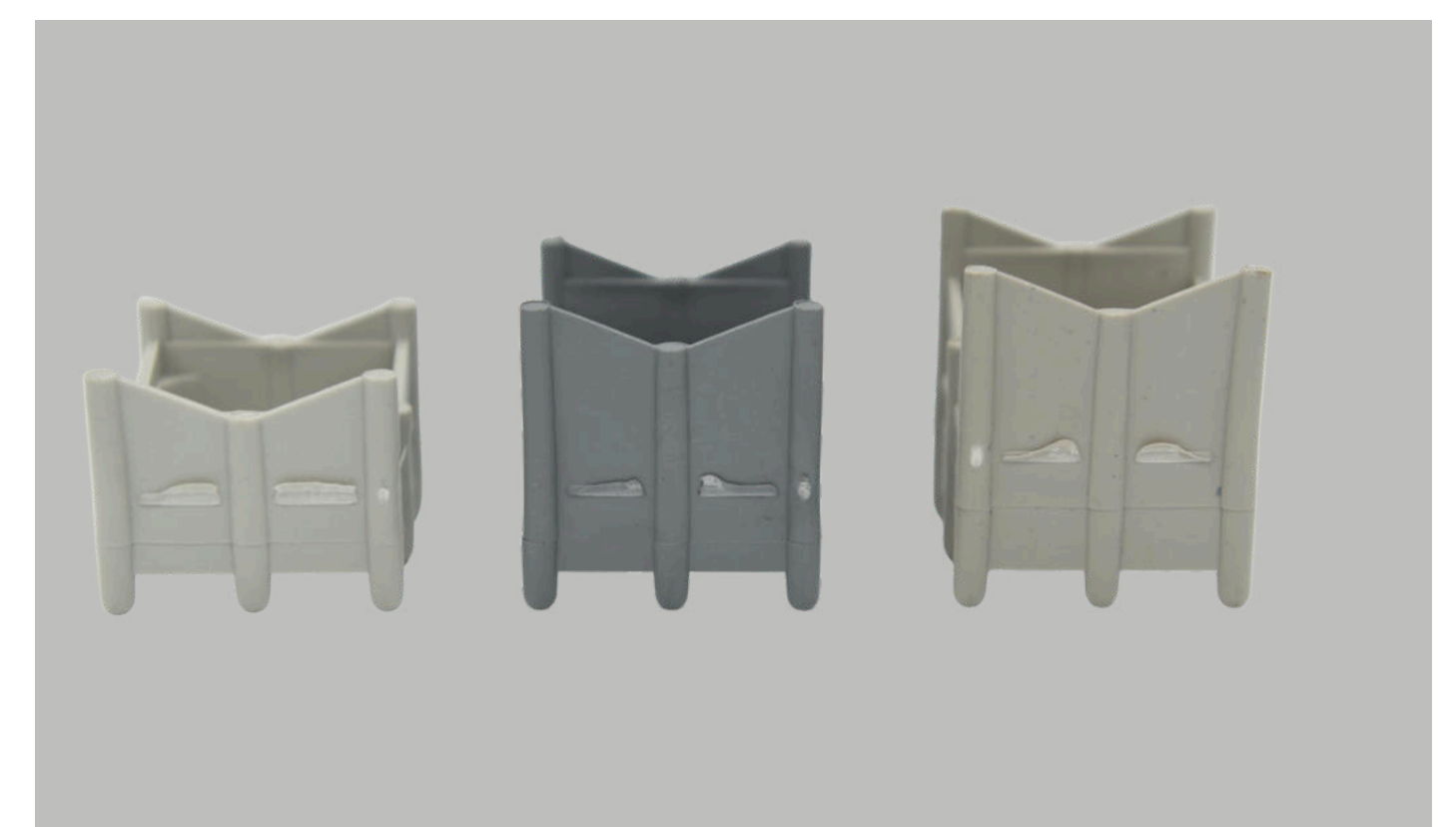
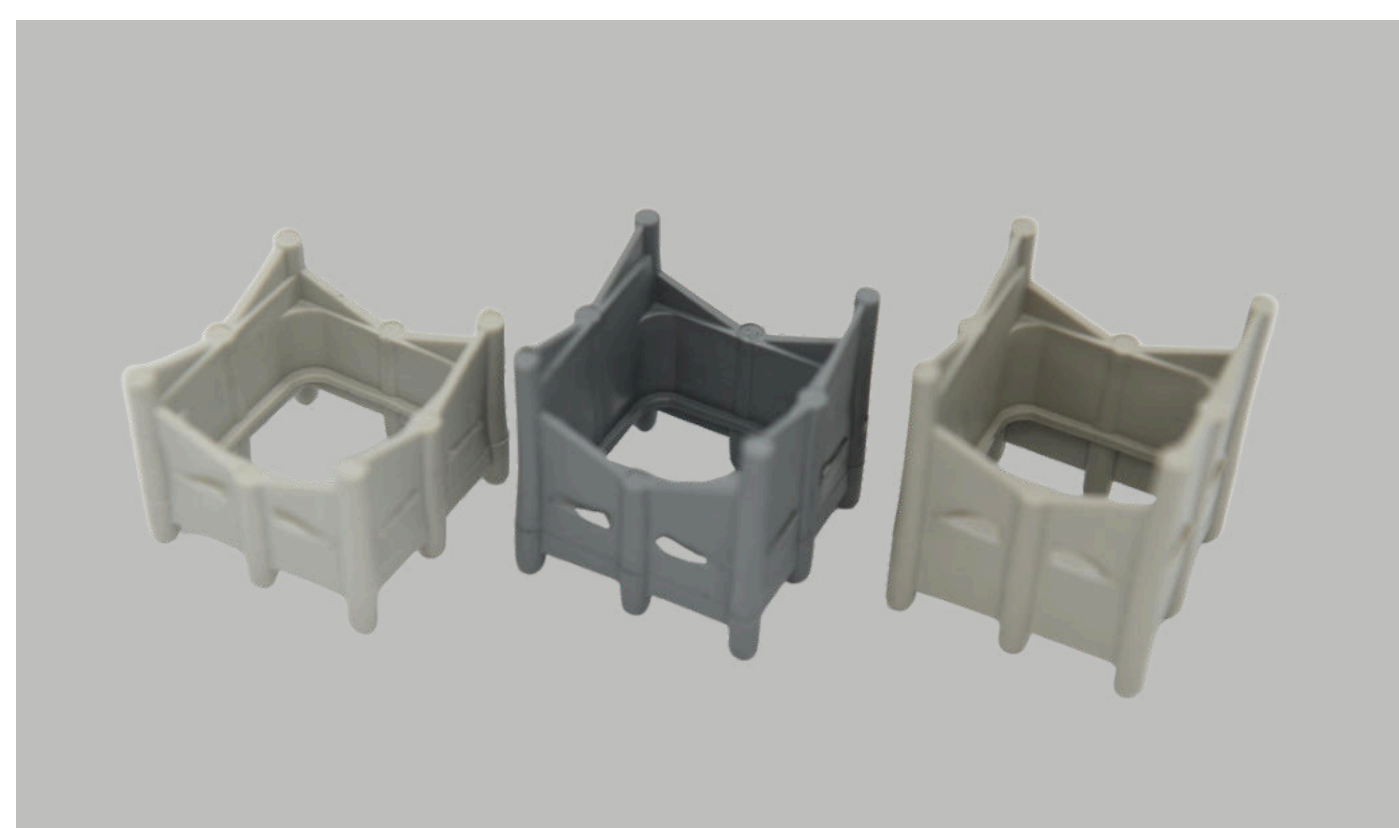


Bottom Deck Chair



Dependable Support with Precision— Bottom Deck Chairs You Can Trust

Danterr's Bottom Deck Chair is a purpose-designed plastic spacer that supports reinforcement bars in concrete slabs, ensuring the correct cover between steel and formwork. It offers high structural integrity and performance under load. Its non-corrosive composition and precise size options make it ideal for a wide variety of projects.

SPECIFICATIONS:

Product Code	Description	Pack Qty
117984	Bottom Deck Chair 20/25	600Pk
107751	Bottom Deck Chair 25/30	100Pk
109386	Bottom Deck Chair 25/30	500Pk
107532	Bottom Deck Chair 30/40	100Pk
107788	Bottom Deck Chair 35/40	100Pk
127055	Bottom Deck Chair 35/45	100Pk
132524	Bottom Deck Chair 45/50	100Pk

Key Features & Benefits

- ▶ **Precise Positioning:** Maintains consistent rebar height for even concrete coverage
- ▶ **Durable Construction:** Made from robust, non-corrosive plastic for long-term performance
- ▶ **Multiple Sizes:** Available in heights from 20/25mm to 45/50mm
- ▶ **Quick & Easy Installation:** Speeds up setup without compromising accuracy
- ▶ **AU/NZ Standard Compliant:** Designed to meet national reinforcement regulations
- ▶ **Trusted Quality:** Preferred by Australian contractors for reliable slab construction

FREE QUOTE

▶ CONTACT US