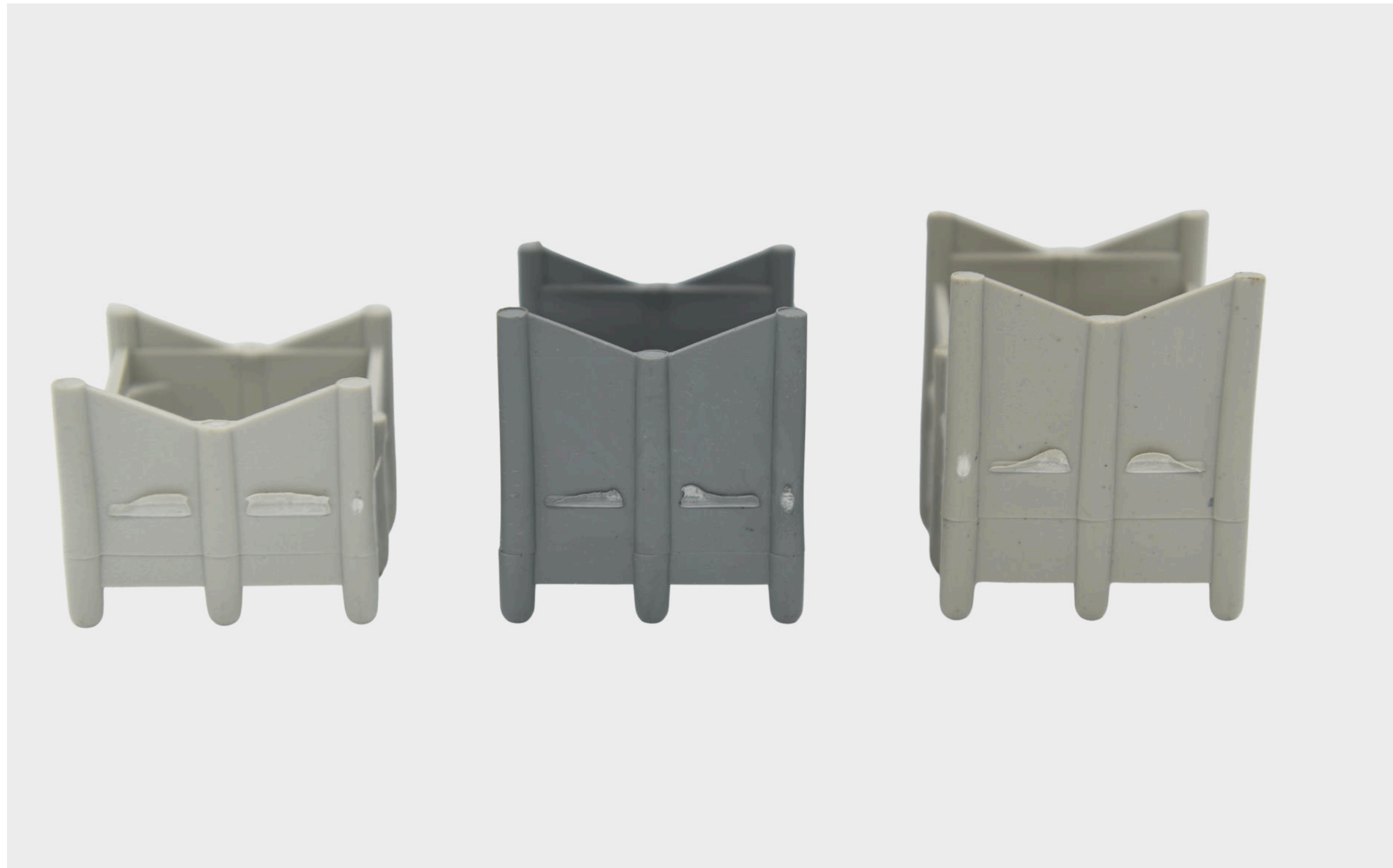


Bottom Deck Chair

PRODUCT DESCRIPTION

Danterr's Bottom Deck Chairs are high-performance plastic spacers crafted to uphold reinforcement bars at accurate heights within concrete slabs. By ensuring correct concrete cover, these chairs prevent steel contact with the ground, boosting structural durability and compliance. Built for harsh Australian conditions, they are ideal for commercial concrete applications.

These bottom deck spacer chairs come in a wide range of sizes—20/25mm, 25/30mm, 30/40mm, 35/40mm, 35/45mm, and 45/50mm—to support varied reinforcement designs. They offer a reliable solution that maintains consistency, optimises rebar positioning, and supports long-term structural integrity. Proudly compliant with AU/NZ standards.



FEATURES & BENEFITS

- High-strength plastic ensures long-lasting stability
- Allows accurate bar placement to maintain correct concrete cover
- Suits varied bar diameters and slab thicknesses
- Fast installation saves time on-site
- Compliant with Australian/New Zealand standards

APPLICATIONS

- Slab-on-ground concrete construction
- Commercial foundations
- Car parks, pavements, and footings
- Precast and tilt-up panel assembly

PACKAGING & AVAILABILITY

Product Code	Description	Pack Qty
117984	Bottom Deck Chair 20/25	600Pk
107751	Bottom Deck Chair 25/30	100Pk
109386	Bottom Deck Chair 25/30	500Pk
107532	Bottom Deck Chair 30/40	100Pk
107788	Bottom Deck Chair 35/40	100Pk
127055	Bottom Deck Chair 35/45	100Pk
132524	Bottom Deck Chair 45/50	100Pk

Bottom Deck Chair

TECHNICAL SPECIFICATIONS

PHYSICAL PROPERTIES

Property	Specification
Material	High-Strength Plastic (UV-Stabilised)
Available Sizes	20/25mm, 25/30mm, 30/40mm, 35/40mm, 35/45mm, 45/50mm
UV Resistance	Yes
Load Bearing	Designed for standard rebar spacing loads

INSTALLATION INSTRUCTIONS

1. Place bottom deck chair directly on prepared formwork or vapor barrier
2. Insert reinforcement bar into holder at required spacing
3. Ensure secure fit and alignment before pouring concrete
4. Use matching size chairs based on required cover

SAFETY

- Non-hazardous product
- Manual handling should follow standard OH&S lifting procedures
- Gloves recommended when handling large volumes