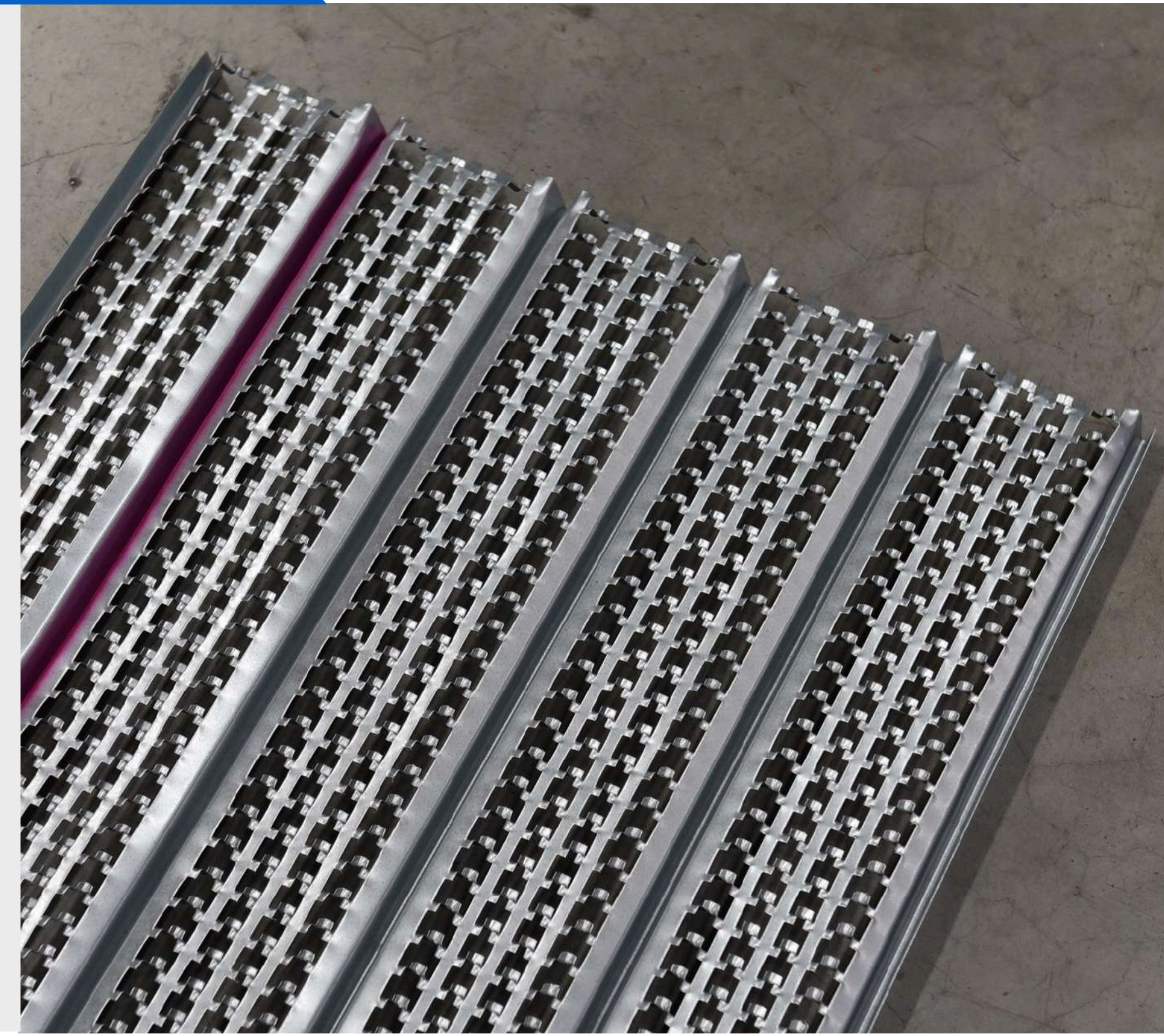


PRODUCT DESCRIPTION

Hy-Rib® is a permanent, stay-in-place formwork system manufactured from expanded metal mesh. Its unique profile allows concrete slurry to pass through during placement, forming a structural key that enhances bond strength and delivers clean, consistent construction joints.

Engineered for safety, efficiency and long-term durability, Hy-Rib® is suitable for a wide range of concrete formwork applications across commercial, civil and infrastructure projects.



FEATURES & BENEFITS

- Strong mechanical key formation for high-performance joints
- Eliminates stop-end scabbling
- Minimises honeycombing and air entrapment
- Supports vertical and horizontal installation
- Easy to handle, align and fix
- Designed for tight nesting and transport efficiency
- Permanent formwork solution reduces waste and speeds install times

APPLICATIONS

- Construction joint formwork
- Wall, beam and column applications
- Soffit slabs
- Temporary or permanent shutters where formed surfaces are concealed
- FRP formwork operations
- Civil infrastructure, transport structures, and commercial concrete works

INSTALLATION INSTRUCTIONS

- 1. Prepare the surface** - Ensure the reinforcement is correctly positioned and secured, and confirm that all required cover, spacers and supports are in place.
- 2. Position the Hy-Rib® sheet** - Place the sheets vertically or horizontally as required by the joint design, making sure the edges are aligned to achieve tight nesting with adjacent panels.
- 3. Fixing** - Fix the Hy-Rib® sheets to the reinforcement or supporting structure using suitable fixings, ensuring the system is stiff enough to withstand concrete pressure during the pour.
- 4. Concreting** - Allow the concrete to flow freely through the Hy-Rib® to achieve proper compaction and vibrate thoroughly to minimise air entrapment and create a strong mechanical interlock.
- 5. Next Pour** - Once the concrete has cured, proceed with the next pour without the need for scabbling or additional surface preparation.

PACKAGING & AVAILABILITY

Product Code	Description	Pack Qty
101786	Grade 2811 0.4mm X 445mm X 2200mm	100

TECHNICAL SPECIFICATIONS

PHYSICAL PROPERTIES

Property	Value
Material Type	Galvanised Expanded metal mesh steel
Sheet Thickness	0.4mm
Weight	3.39kg/m ²
Z joint	952 mm ³ /m - Rib in Tension
Z pan	1266 mm ³ /m - Face in Tension
Bending Stiffness (EI)	2 kNm ² /m
Working Maximum Reaction	10.88 kNm/m
Assumed Maximum Working Shear	5.44 kNm/m
Installation Orientation	Horizontal or vertical
Formwork Type	Permanent stay-in-place
Edge Detail	Tight-nesting profile

Notes

1. Hy-Rib® is treated as a single-use sacrificial material with a minimum safety factor of 1.4 on ultimate failure. Failure stress is based on the minimum ultimate tensile strength of the Hy-Rib® sheet.
2. Bending stiffness values are for deflection estimation only and account for geometric changes in the Hy-Rib® profile as it deflects.

HEALTH AND SAFETY SHEET

IDENTIFICATION

Hy-Rib® is an expanded metal formwork sheet.

COMPOSITION

Galvanised expanded metal mesh steel

HAZARDS IDENTIFICATION

- Potential for cuts from sharp steel edges.
- Fumes from high-temperature exposure may be toxic or irritating.
- Dust and noise may be generated when cutting with abrasive tools.

FIRST AID MEASURES

- **Skin and Eye Contact:** Treat cuts from steel edges as required. Rinse eyes if contaminated with dust.
- **Ingestion:** Not applicable.
- **Inhalation:** Move the person to fresh air and remove them from dust or fumes.

FIRE FIGHTING MEASURES

Hy-Rib® is non-flammable and does not contribute to fire loads.

ACCIDENTAL RELEASE MEASURES

Not applicable, as Hy-Rib® is supplied as a solid metal sheet.

HANDLING & STORAGE

- Do not use bands or straps for lifting.
- Wear suitable PPE, including gloves and safety glasses, when handling Hy-Rib®.
- Assess manual handling risks before lifting bundles or panels.
- Store bundles on firm, level ground in dry conditions to prevent corrosion and maintain stability.

EXPOSURE CONTROLS

- Use gloves, safety goggles, and suitable respiratory protection when cutting or handling.
- Some products may contain trace amounts of cutting fluid; wash hands after handling.
- Maintain good hygiene practices during and after use.

PHYSICAL & CHEMICAL PROPERTIES

- Supplied in a variety of lengths, widths and gauges.
- Metallic grey in appearance.

STABILITY & REACTIVITY

Hy-Rib® is stable under normal conditions. Exposure to high temperatures can generate fumes.

TOXICOLOGICAL INFORMATION

- Abrasive cutting may produce dust equivalent to the base metal and its coating.
- High temperatures may release fumes that can irritate the respiratory system.

ECOLOGICAL INFORMATION

No known environmental hazards.

DISPOSAL CONSIDERATIONS

Recycle or dispose of Hy-Rib® in accordance with relevant Waste Management Licensing Regulations.

TRANSPORTATION INFORMATION

Not classified as hazardous for transport.

REGULATORY INFORMATION

Hy-Rib® is classified as an article and is not subject to CHIP3 regulations.