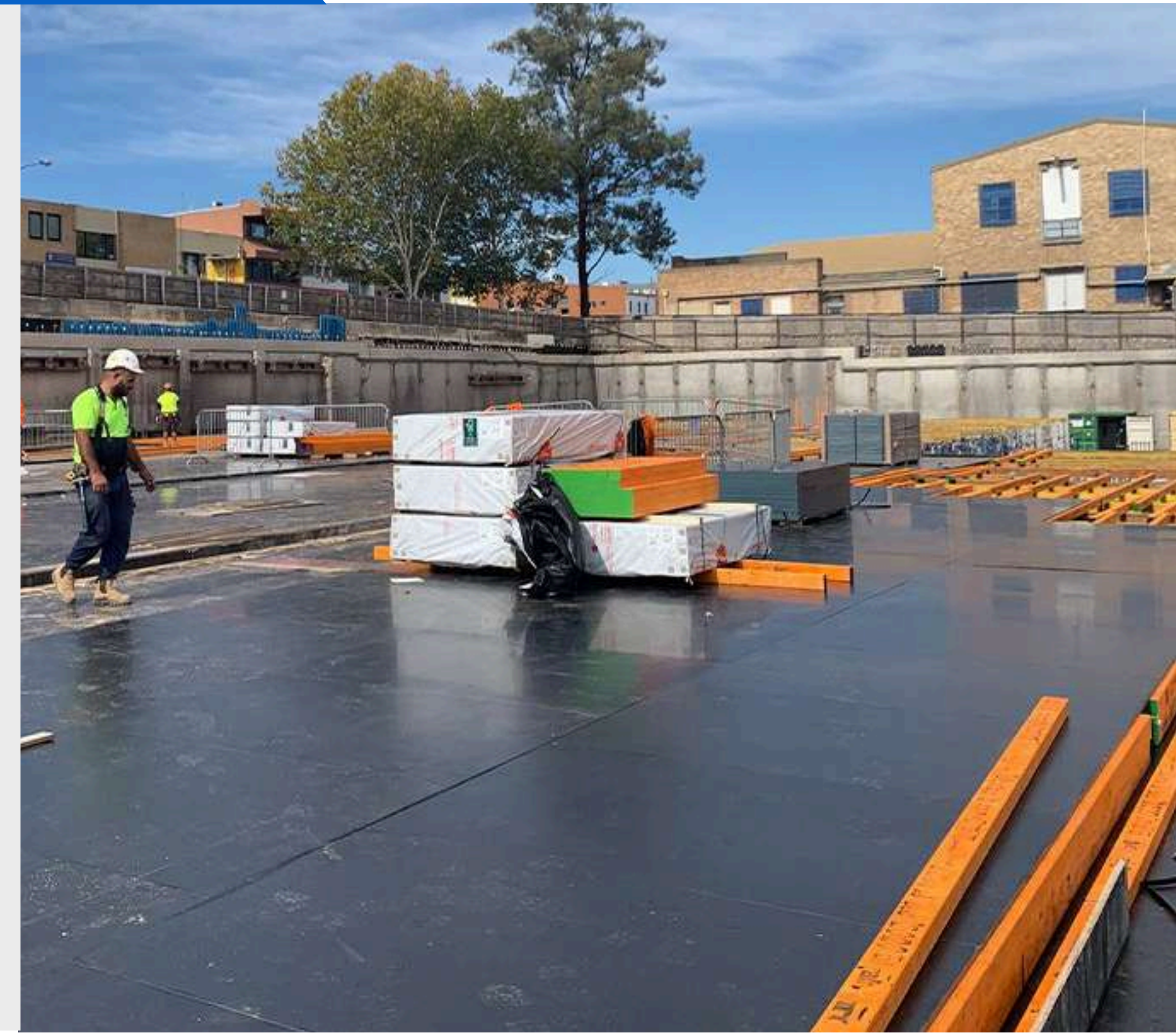


PRODUCT DESCRIPTION

Formply is an F17 structural plywood panel engineered for demanding concrete formwork applications across commercial and civil construction projects. Manufactured from all-hardwood sustainable plantation Eucalyptus, this high-performance formplywood delivers strength, dimensional stability and consistent surface performance under site conditions.

Designed with special cushion veneer and precision plywood lamination, Formply offers enhanced resistance to construction moisture, improved hardness and a smooth overlay surface suitable for repeat use. Formply 17 is widely specified for suspended slab and general formwork systems, providing a practical balance of rigidity, durability and handling efficiency.



FEATURES & BENEFITS

- Resistant to construction moisture
- Increased reuse potential in formwork systems
- Tough and versatile structural form board solution
- Reduced risk of expansion or contraction
- Durable under repeated pour cycles
- Rigid, stable and lightweight plywood panel

APPLICATIONS

- Suspended slab formwork
- Wall and column formwork
- Beam formwork systems
- Civil infrastructure construction
- Commercial building projects

PACKAGING & AVAILABILITY

Product Code	Description	Sheets per pack
101901	F17 1800mm x 1200mm x 17mm	40
109240	F17 2400mm x 1200mm x 17mm	40

INSTALLATION & HANDLING

- **Confirm Engineering Requirements** – Ensure joist spacing, bearer layout and propping are installed in accordance with project engineering design, slab thickness and pour loads.
- **Correct Panel Orientation** – Lay Formply sheets with face grain perpendicular to supports and ensure all joints are tight and properly supported to minimise grout loss.
- **Secure Fixing & Edge Protection** – Fix panels at specified centres and seal all cut edges prior to installation to reduce moisture ingress.
- **Controlled Concrete Placement** – Apply approved release agent evenly and maintain designed pour rates and vibration practices to support consistent surface results.
- **Careful Stripping & Storage** – Strip without levering against the face, clean promptly after use, and store flat in dry conditions to maximise reuse cycles.

TECHNICAL SPECIFICATIONS

PHYSICAL PROPERTIES

Property	Specification
Construction	all hardwood Eucalyptus
Standard	AS6669
Bond Type	Melamine fortified urea formaldehyde Type B Bond
Overlay	60/165 Grams per Square Meter by Dynea
Surface Grade	Class 2 and Class 3
Edge-Sealing	Water-Resistant Sealant coating in Grey Colour
Stress Grade	F17
Certificate	Benchmark JAS-NZS
Length and Width	+/- 0.5mm
Tolerance	+/- 2% Overlay not Included Sheet Sizes
Thickness	17mm
Sheet Sizes	2400 x 1200; 1800 x 1200
Formaldehyde Emission	E1 or E0
Chain of Custody	FSC

HANDLING & SAFETY

- Wear appropriate PPE including gloves and eye protection.
- Use respiratory protection when cutting formplywood.
- Store form boards flat on firm, level ground in dry conditions.